

## WHY IRS

Though India has been responding to disasters to the best of its capabilities, the analysis of various disaster response indicated the following short comings.

- Lack of accountability because of the ad-hoc and emergent nature of arrangements and no prior training for effective performance;
- Lack of an automatic orderly and systematic planning process;
- Unclear chain of command and supervision of response activity;
- Lack of proper communication plan, inefficient use of available resources, use of conflicting codes and terminology many a times resulting in complete communication failure;

## WHY IRS (Contd...)

- Lack of predetermined method / system to effectively integrate inter-agency requirements into the disaster management structures and planning process;
- Lack of coordination between the first responders, professionals and NGOs with specialized skills during the response phase;
- Lack of use of common terminology for different resources resulting in improper requisitioning and inappropriate resource mobilization and delay etc;

**NOTE:**

*Looking at the world best practices, the American Incident Command System was adopted*

*It was modified to suit our response requirements and fit in to the Indian administrative structure and is called the IRS*

## WHAT IS IRS

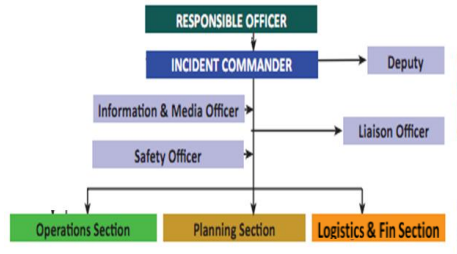
- **IRS is a mechanism which reduces adhocism in response through a well conceived team(IRT)**
- **It incorporates all the tasks that may need to be performed during the response.**
- **It identifies and pre-designates officers to perform various duties and get them trained in their roles.**
- **It is a flexible system and only those Sections / Branches may be activated in the team which are required to meet the disaster situation**

## BASIS OF IRT FORMATION

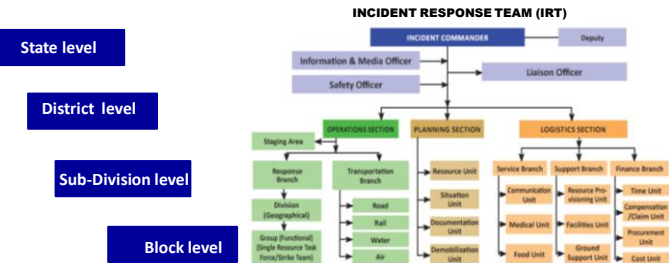
The main response management functions in any disaster keeping in mind the administrative structure of the state and the districts in India are;

- **Overall and complete responsibility for effective response – RESPONSIBLE OFFICER**
- **Command and control of the specific response team – INCIDENT COMMANDER**
- **Supervision and Performance of different tactical actions required for disaster response. – OPERATIONS SECTION CHIEF**
- **Collection, analysis of data, working out the resource requirement and preparing an action plan – PLANNING SECTION CHIEF**
- **Providing logistic support, procurement, maintaining accounts and ensuring cost effectiveness. – LOGISTIC & FINANCE SECTION CHIEF**

## MAJOR FUNCTIONARIES OF IRT



## LEVELS OF INCIDENT RESPONSE TEAMS



- **In case of early warning, the RO will trigger the IRT as required or necessary.**
- **In case there is no early warning, the lowest formation of IRT will respond and alert the higher formation.**

## COORDINATION AMONGST VARIOUS LEVELS OF IRT



Coordination IRT.exe

## FEATURES OF IRS

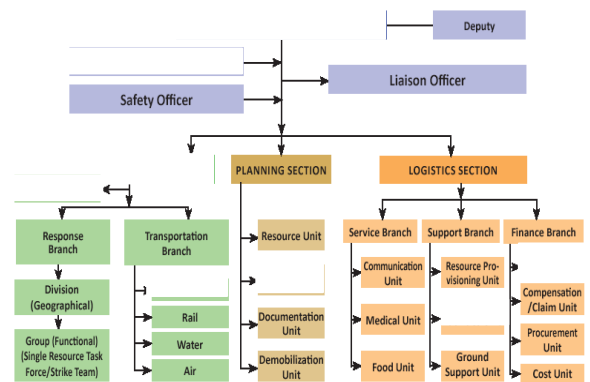
1. Management by objectives & Incident Action Plan
2. Flexibility
3. Span of control
4. Multi Tasking
5. Accountability
6. Resource Management
7. Common Terminology
8. Unity of command and chain of command
9. Transfer of Command
10. Unified Command

## MANAGEMENT BY OBJECTIVES & INCIDENT ACTION PLAN

- IRS requires an Incident Action Plan for the day based on the scenario and availability of resources.
- IRS also requires a de-briefing meeting at the end of the day.
- This results in a **complete stock taking** of the achievements / non-achievement of the day and becomes the basis of further planning of the next IAP.
- This also results in focused response

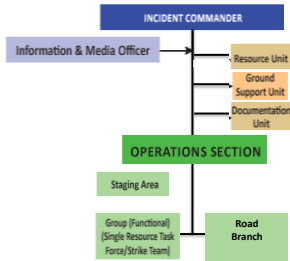
## FLEXIBILITY

### IRT FOR BIG INCIDENT

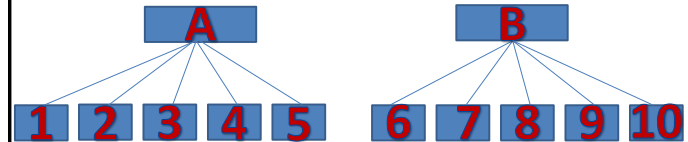
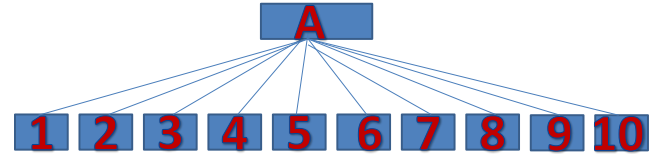


## FLEXIBILITY

### IRT FOR SMALL INCIDENT



## SPAN OF CONTROL

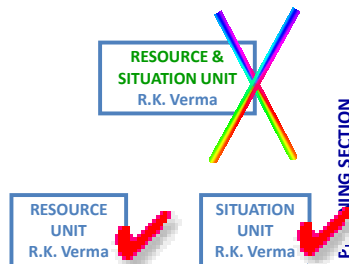


## MULTI TASKING

### INCASE OF SHORTAGE OF OFFICERS MULTI TASKING CAN BE DONE IN IRS

1. **DO NOT COMBINE ORGANIZATIONAL UNITS.**

2. **ONE PERSON MAY SUPERVISE MORE THAN ONE UNIT)**



## ACCOUNTABILITY

### Forms and formats

1. Incident Briefing forms
2. Communication Plan
3. Medical Plan
4. Check-in Form

## RESOURCE MANAGEMENT

### KIND AND TYPE



→ **SINGLE RESOURCES  
INCLUDES PERSONNEL  
AND EQUIPMENT**



**TASK FORCES  
COMBINATION OF  
SINGLE RESOURCES**



**STRIKE TEAM  
COMBINATION OF SAME**

## UNIFIED COMMAND

- To make multiple agencies having concurrent jurisdictions and independent chain of command function as a team without losing or abdicating agency authority, responsibility or accountability, the concept of Unified Command becomes necessary and useful.
- It helps in establishing a common set of objectives and strategies under one commander and avoid duplication of effort.
- This has to be formed at the highest level of the administration viz. Governor / Lt. Governor (LG) / Administrator / Chief Minister (CM) and assisted by Chief Secretary (CS) Heads of different agencies involved so that decision taken are followed and implemented by all.

## AREA COMMAND

- Area Command is activated when span of control becomes very large either because of geographical reasons or because of different types of incidents occurring at different places at the same time.
  - e.g. in Earthquake followed by fire and epidemic there could be separate Area Commander for fire control and epidemic control.
- Area Command may also be activated when a number of administrative jurisdictions are affected.
- It provides closer super vision, support to the IRTs and resolution of conflicts locally.

## OTHER FEATURES

**Common Terminology**

**Unity of command and chain of command**

**Transfer of Command**

## IRS FACILITIES

Emergency Operation Center

Incident Command post

Staging Area

Base

Camp

Relief Camp

Heli Base

Heli Pad



## EMERGENCY OPERATION CENTER

- One Sr. Administrative Officer as EOC in-charge having experience in DM with required assistants;
- Representation of all concerned line departments (ESF) and central agencies with authority to quickly mobilise and integrate their resources and resolve conflicts if any arise;
- Adequate space with proper infrastructure to accommodate the participating agencies and departments;
- Communication facilities with last mile connectivity;



- A vehicle mounted with HF, VHF and satellite telephone for deployment in the affected site to provide immediate connectivity with the headquarters and ICP;

## EMERGENCY OPERATION CENTER (Contd...)

- Map depicting affected site, resources deployed, facilities established like Incident Command Post, Staging Area, Incident Base, Camp, Relief Camp, Helibase, Helipad, etc.
- DM plans of the State, District and all line departments;
  - Directories with contact details of all emergency services and nodal officers;
  - Connectivity with all District headquarters and police stations;
  - Database of NGOs working in different geographical areas;
  - Demographic details of the State and Districts;
- Online / Web based Decision Support System



## IRS FACILITIES

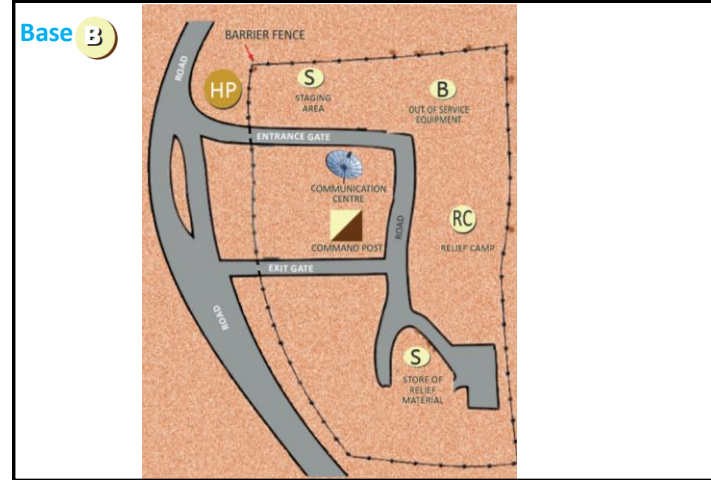
### INCIDENT COMMAND POST



## IRS FACILITIES



## IRS FACILITIES



## IRS FACILITIES



## IRS FACILITIES



## IRS FACILITIES



## IRS FACILITIES



## COMMUNITY PARTICIPATION IN RESPONSE



Thanks