

# LANDSLIDES OF CHAMBA DISTRICT HIMACHAL PRADESH



33°0'0"N

33°0'0"N

32°30'0"N

32°30'0"N

76°0'0"E

76°30'0"E

77°0'0"E

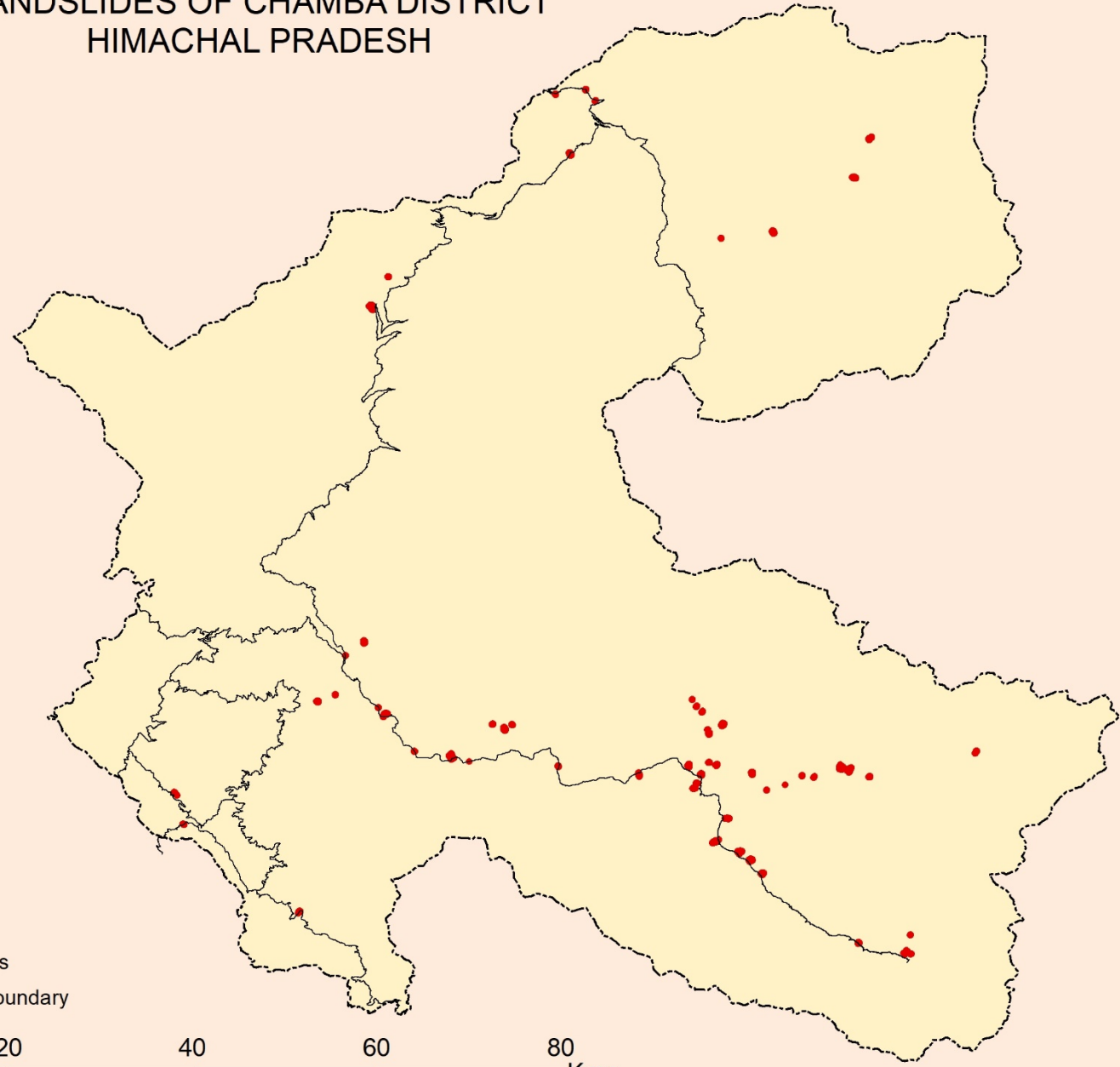
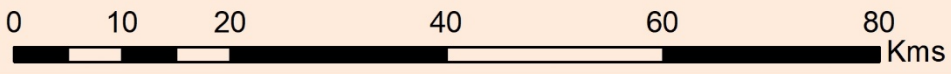
76°0'0"E

76°30'0"E

77°0'0"E

## Legend

-  Roads
-  Landslides
-  District Boundary





# LANDSLIDES OF KINNAUR DISTRICT HIMACHAL PRADESH

78°00'E

78°30'E

79°00'E



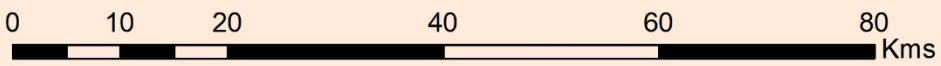
32°00'N

32°00'N

31°30'N

31°30'N

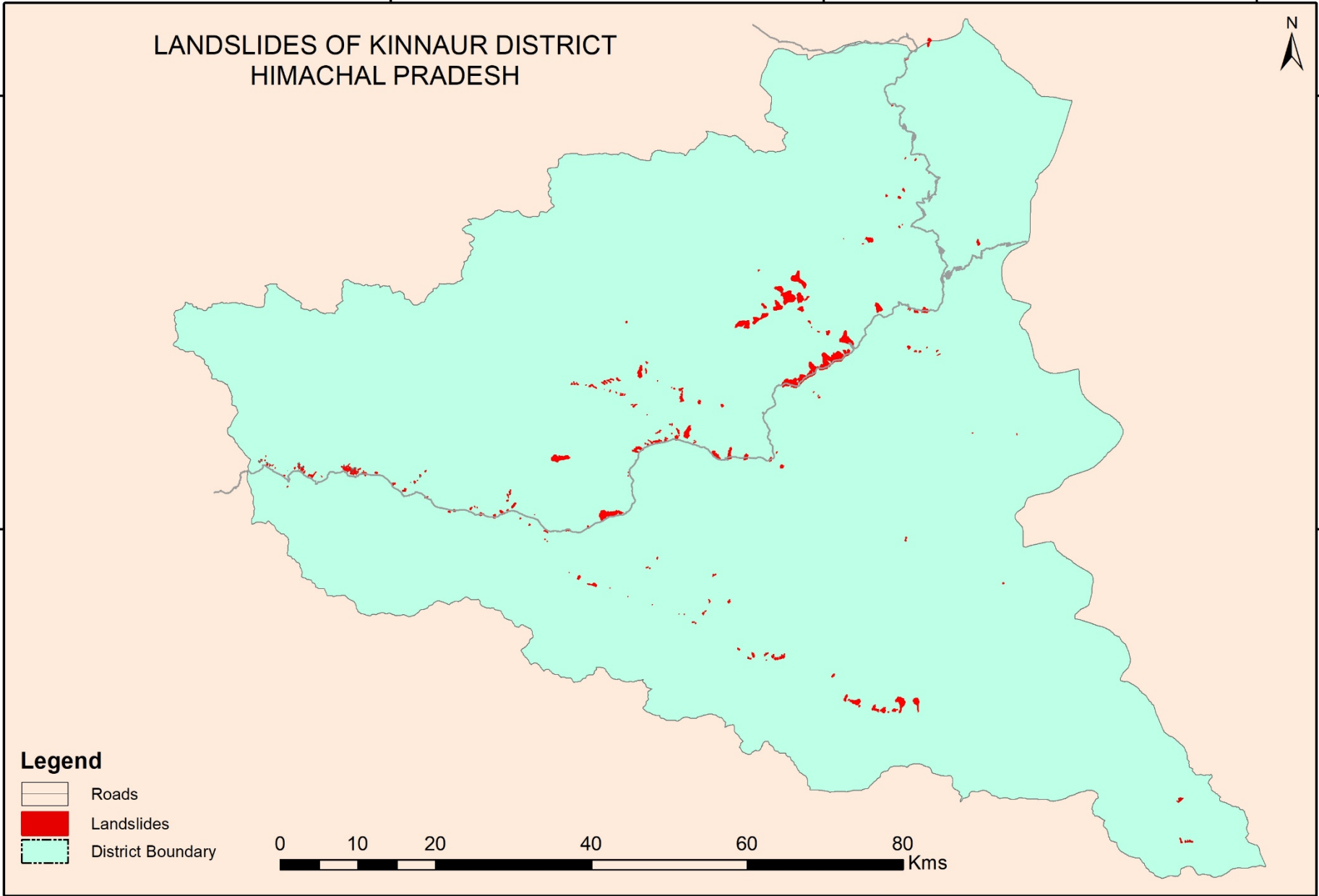
- Legend**
-  Roads
  -  Landslides
  -  District Boundary



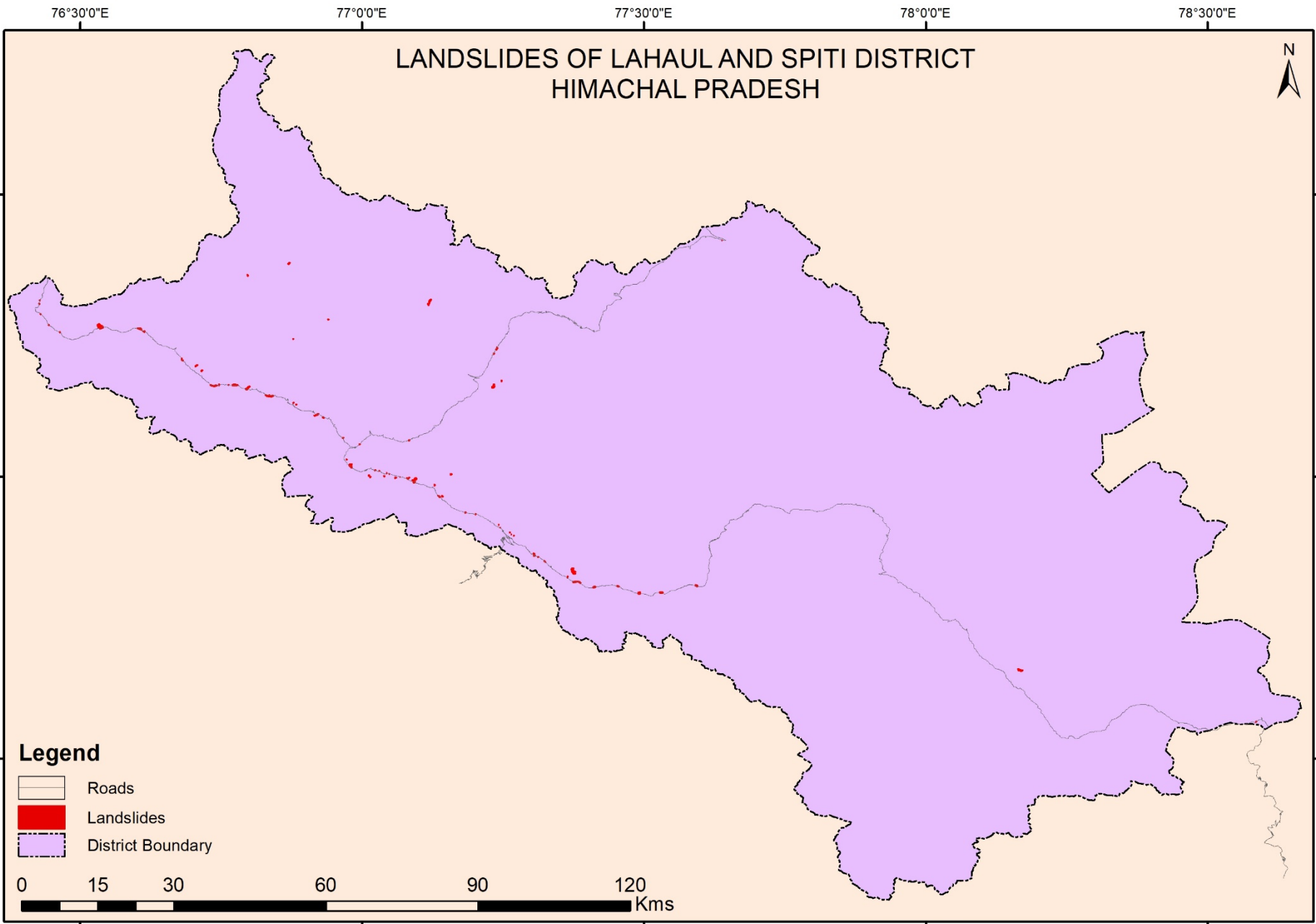
78°00'E




78°30'E

79°00'E

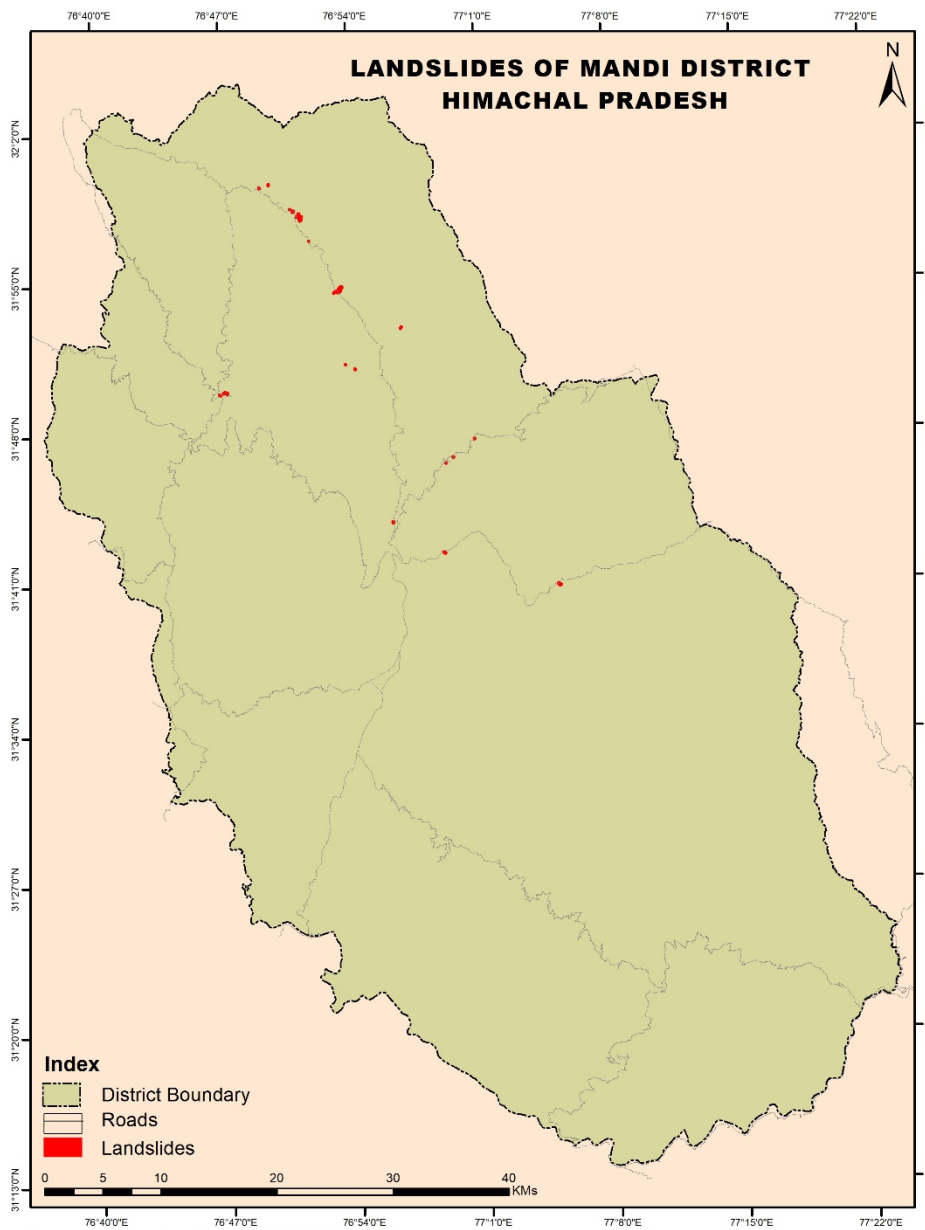


# LANDSLIDES OF LAHAUL AND SPITI DISTRICT HIMACHAL PRADESH

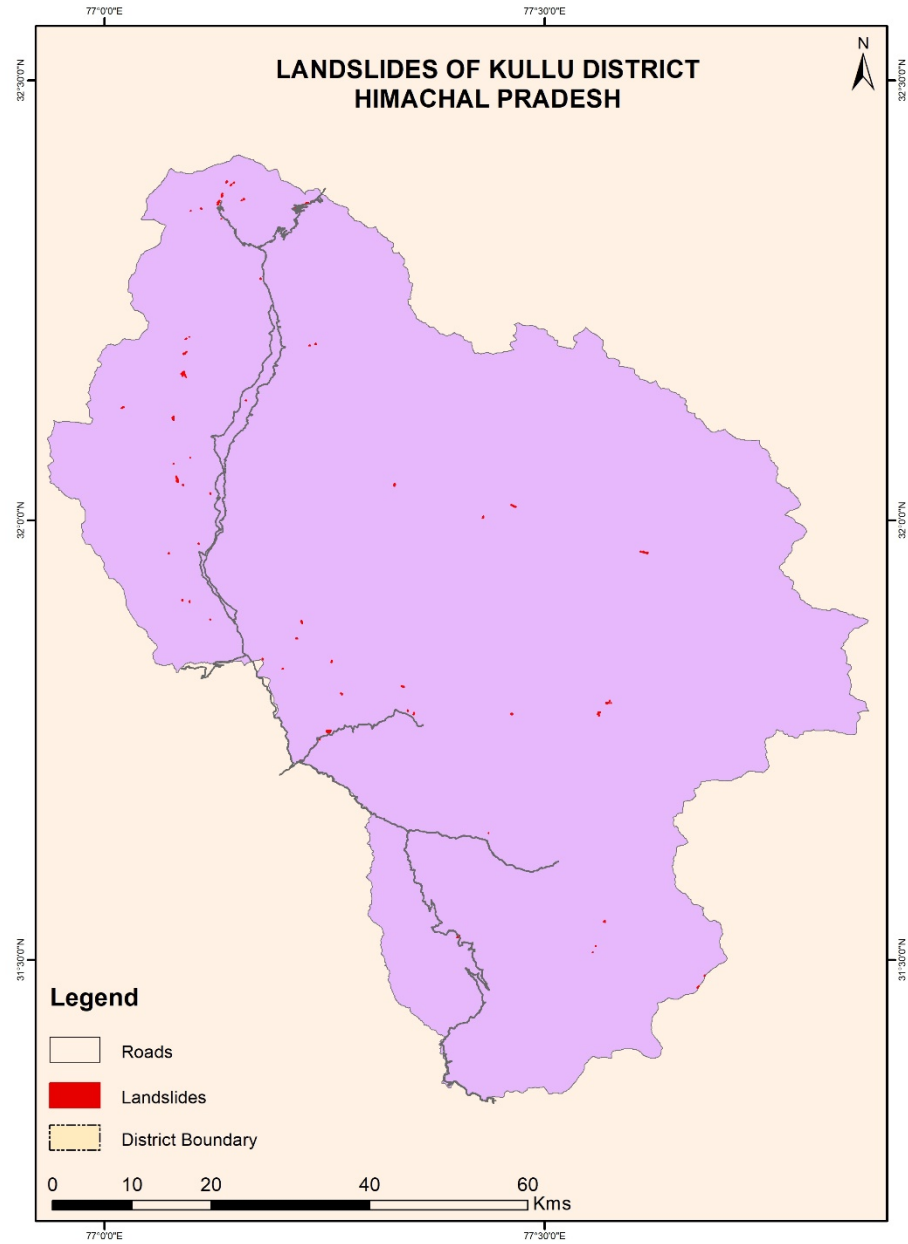


- Legend**
-  Roads
  -  Landslides
  -  District Boundary

0 15 30 60 90 120 Kms



Source: Google Earth and IRS- R2, LISS III



# LANDSLIDES OF SOLAN DISTRICT HIMACHAL PRADESH

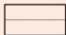

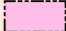


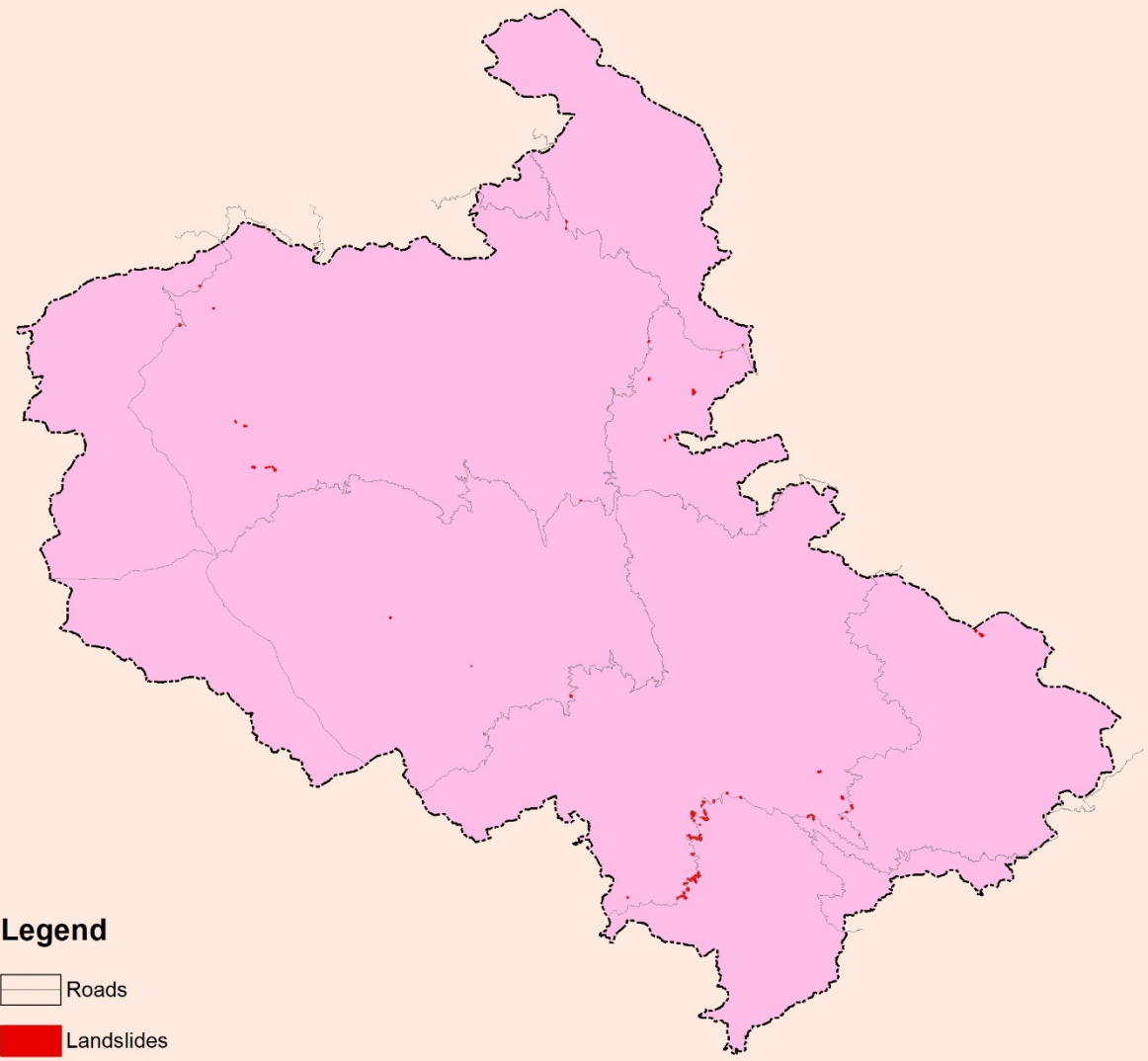
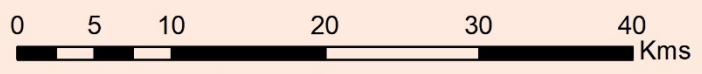
31°20'0"N  
31°10'0"N  
31°00'0"N  
30°50'0"N  
30°40'0"N

31°20'0"N  
31°10'0"N  
31°00'0"N  
30°50'0"N  
30°40'0"N

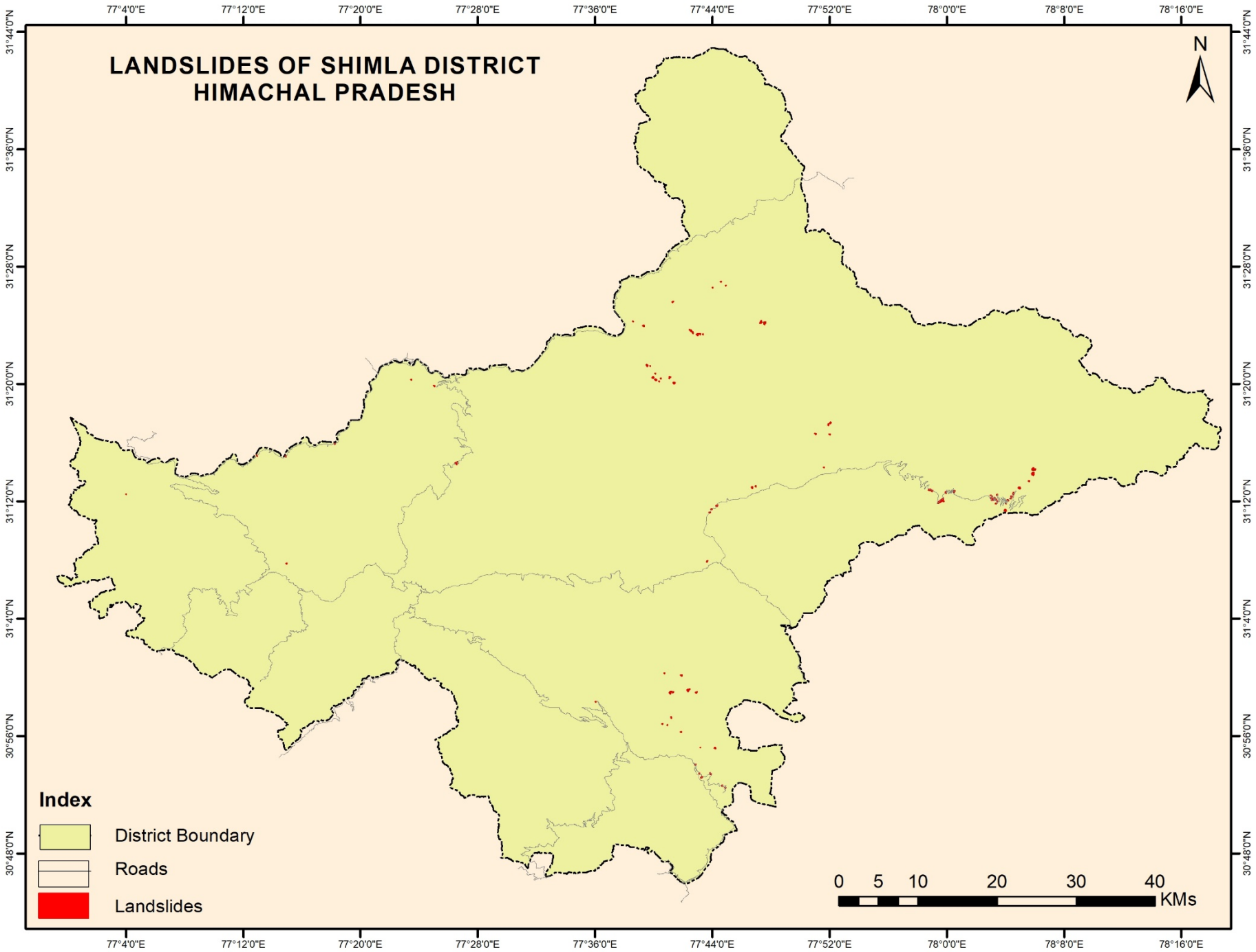
76°40'0"E 76°50'0"E 77°0'0"E 77°10'0"E

76°40'0"E 76°50'0"E 77°0'0"E 77°10'0"E


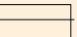

- Legend**
-  Roads
  -  Landslides
  -  District Boundary

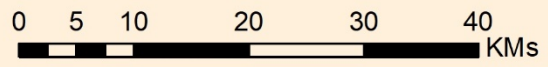


# LANDSLIDES OF SHIMLA DISTRICT HIMACHAL PRADESH



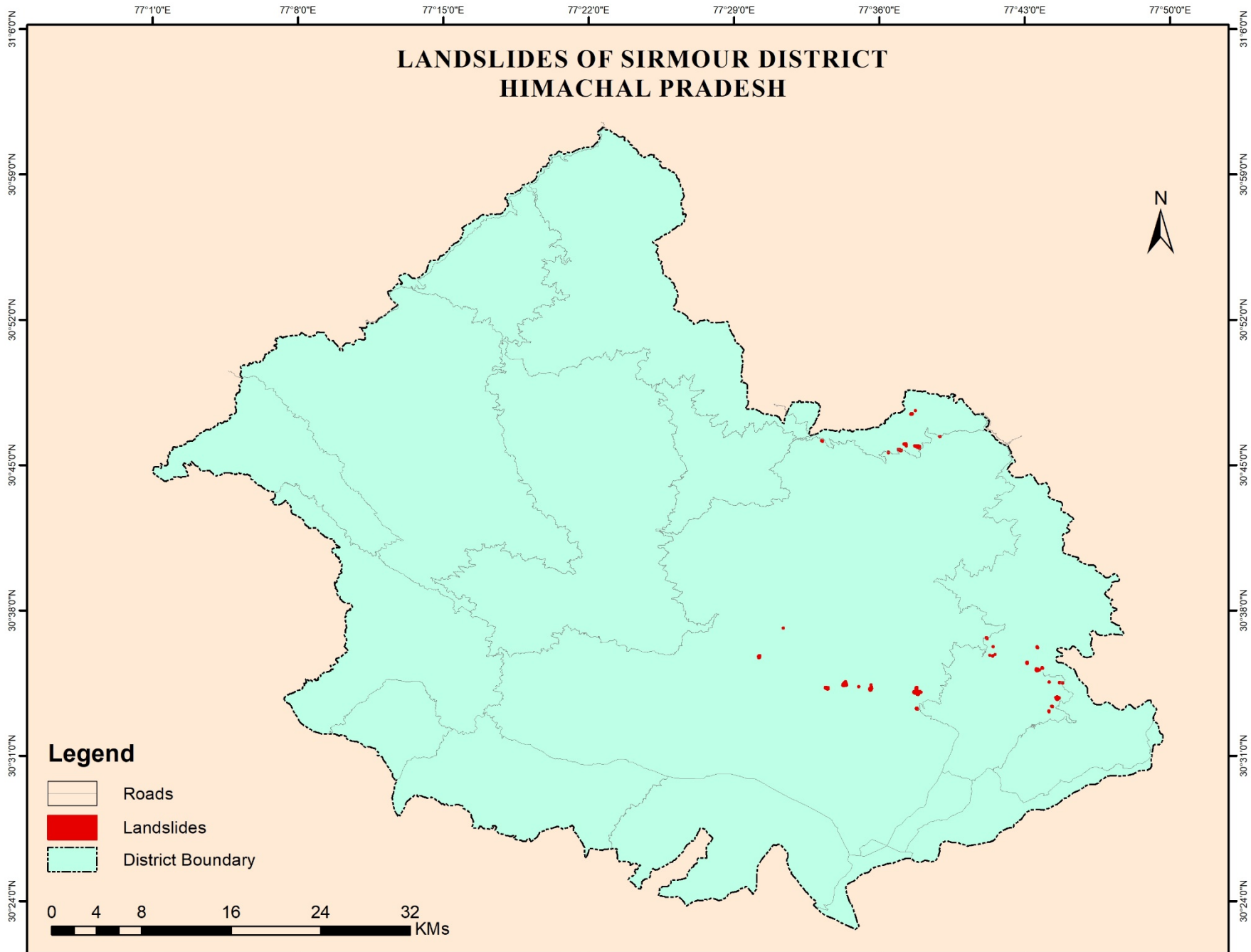
## Index

-  District Boundary
-  Roads
-  Landslides



Source: Google Earth and IRS- R2, LISS III

# LANDSLIDES OF SIRMOUR DISTRICT HIMACHAL PRADESH



## Legend

-  Roads
-  Landslides
-  District Boundary

0 4 8 16 24 32  
KMs